

BELHAVEN

TARTAN

VOLUME 128 | ISSUE NO.2 • 2016

GRAND
OPENING

THE DR. BILLY KIM INTERNATIONAL CENTER

— PLUS —

INAUGURAL SUMMIT ON

THE CHURCH AND MENTAL HEALTH

HOMECOMING
BACK TO BELHAVEN **2016**

U.S. NEWS NAMES BELHAVEN
BEST VALUE



BELHAVEN UNIVERSITY
A grace-centered Christian University
in the heart of Southern hospitality

ENTHUSIASTICALLY CHRISTIAN

Every academic program reflects a thoughtful, loving, and biblically based Christian worldview—to inform your thinking, to strengthen your faith, to empower your calling, and to motivate your service.

ACADEMICALLY FULFILLING

Challenging preparation equips your mind and heart to engage the world of ideas, achieve career success, and honor God through excellence.

GLOBALLY CONNECTED

Here, the world comes to you, and you go to the world—guided by faculty who help you integrate academic insights with biblical truth so you can effectively impact the world, and its complex brokenness, with the hope of Christ and a life of service.

SUPPORTIVELY CARING

Faculty, coaches, and staff support your unique learning styles, needs, and passions with mentoring relationships characterized by compassion, encouragement, understanding, and respect.

NATIONALLY RECOGNIZED

From academic quality, to “best-buy” value, to modern campus facilities, to creative curriculum, to remarkable diversity, to a collegial faculty/staff work environment, to robust NCAA Division III athletics, to enduring Christian commitment—Belhaven University consistently ranks as “one of the best.”

DYNAMICALLY CREATIVE

Our vibrant learning community inspires you to unleash your God-given creativity—because imagination is vital to success in every profession and to embracing future challenges with hope and resolve.

TECHNOLOGICALLY ADVANCED

Campus smart-classrooms, advanced learning laboratories, and blazing-fast wireless Internet enhance your academic experience while you study in a dynamic state capital famous for its literature, art, sports, music, cuisine, medical research, and business opportunities, just to name a few.

SURPRISINGLY AFFORDABLE

Competitive pricing, strong scholarships, and innovative degree design and accommodating scheduling ensure you will graduate in 4 years (not 5 years—or more) with a top-quality, private, Christ-centered education at public university prices!

**A charming campus where you'll be loved,
challenged, and prepared.**

**Belhaven University – Jackson, Mississippi
OUR STANDARD IS CHRIST**

THINKING ABOUT HIGHER ED



Five years ago this month, we received devastating news that 100-year-old Fitzhugh Hall was crumbling and would need to be demolished. The future seemed bleak.

But God is always at work in the valleys of life, and, from that low-point, we began a five-year period of growth and building that went far beyond the greatest hopes we could ever have for Belhaven University.

Below, I have listed some of the 73 significant advances accomplished over the past five years:

- Total enrollment increased 43%, from 3,198 to 4,575 students.
- \$21 million raised for capital projects, scholarships and endowment.
- Five new buildings opened: science labs and classrooms, 135-bed apartment complex, international center, sports administration and football buildings, and football/soccer stadium and track.
- Seven new undergraduate majors launched: nursing, social work, computer science, film production, applied English, B.F.A. in Theatre and an engineering partnership.
- Eight new graduate degrees started: Master of Fine Arts in Dance, Master of Health Administration, Master of Science in Leadership, Master of Education - Curriculum and Instruction, Master of Education - National Board Preparation, Master of Education - Educational Technology, Master of Education in Reading Literacy, and Master of Education Leadership.

- Academics programs significantly advanced, including: revolutionizing the science and mathematics faculty and curriculum, designing a new general core curriculum, building a vibrant retention program, offering English as a Second Language (ESL) for international students, creating the Institute for International Care and Counsel, offering a textbook rental option for traditional students, and developing hybrid graduate programs (blended online and on-ground).
- Athletic affiliation successfully changed from NAIA to NCAA Division III, and track and field launched as an intercollegiate sport for both men and women.
- Dance department invited to perform at the Kennedy Center.
- Belhaven recognized with new accolades including being named to the following “Best-of” lists: Chronicle of Higher Education: America’s Great Colleges to Work For, Colleges of Distinction and Christian Colleges of Distinction, US News and World Report: #20 Best Value Schools Southern Regional Universities, and Best Christian Workplace.

But even these achievements do not tell the full story.

Look left on this page in the *Tartan* and read our new summary of Belhaven’s educational distinctives. These eight statements articulate what sets Belhaven apart in higher education. You’ll be inspired to see the remarkable strengths of this University.

God has blessed Belhaven University, taking us from the discouragement of very bad news five years ago to a celebration of dramatic successes today—successes that could come only from the Lord.

I cannot wait to see what is next.

Serving Him always,

Roger Parrott, Ph.D.
President of the University



Features



*Grand Opening:
The Dr. Billy Kim
International Center*

2



*What a Difference:
The Addition of Belhaven
Bowl Stadium*

10



*Summit Connects
Faith and Mental
Health in Mississippi*

14



*U.S. News Names
Belhaven Best Value*

18



*White House
Honors Vicki
Moorehead ('88)*

23

South Korea and Belhaven celebrated the opening of the new international center.

Departments

THINKING ABOUT
HIGHER EDUCATION
(INSIDE COVER)

CAMPUS NEWS **16**

ALUMNI NEWS **21**

PARTING ART **24**

Follow Belhaven News

BELHAVEN.EDU/NEWS

@BELHAVENU
FOR TWITTER AND LINKEDIN

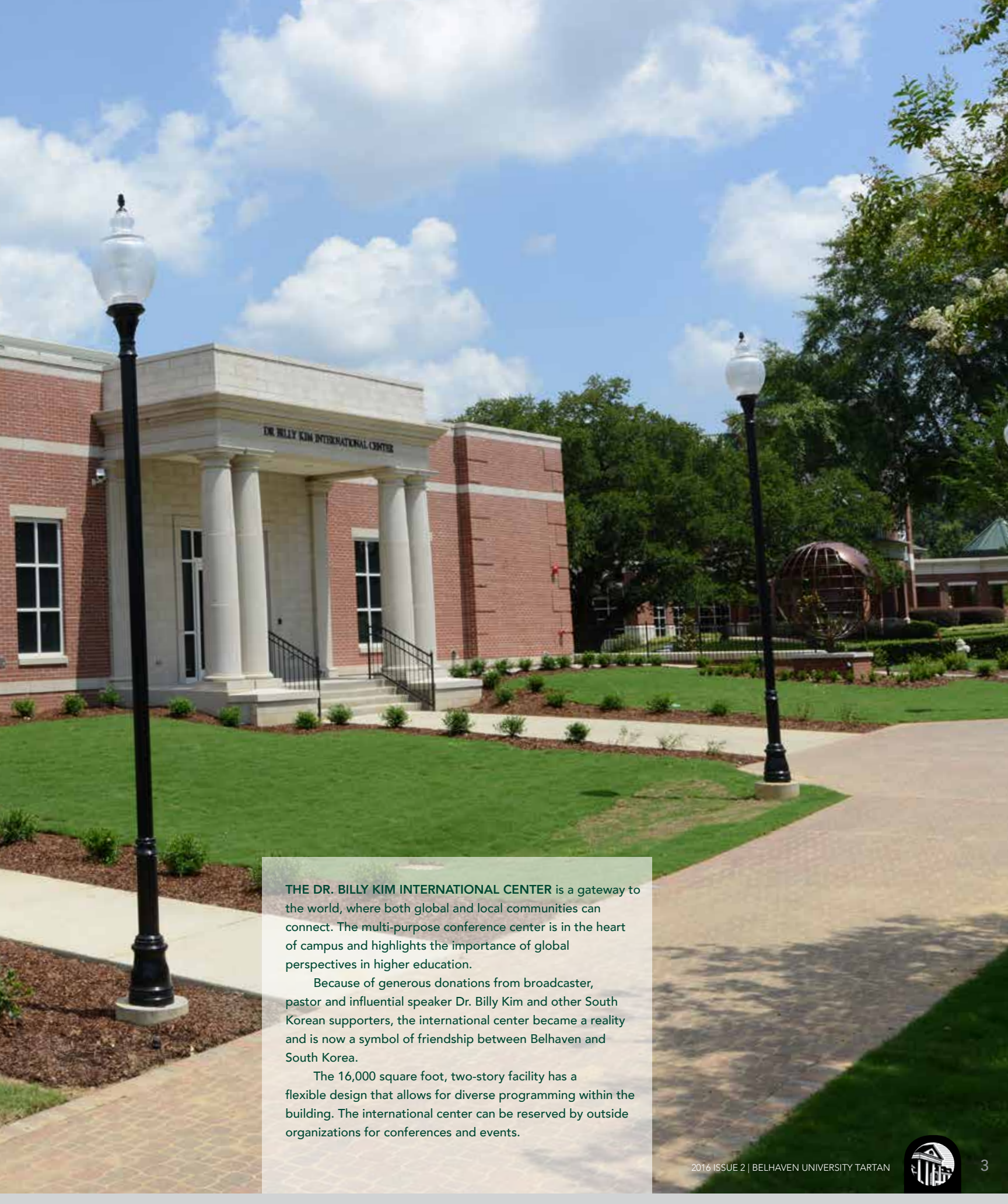
/BELHAVENUNIVERSITY
FOR FACEBOOK



GRAND OPENING

THE DR. BILLY KIM INTERNATIONAL CENTER





THE DR. BILLY KIM INTERNATIONAL CENTER is a gateway to the world, where both global and local communities can connect. The multi-purpose conference center is in the heart of campus and highlights the importance of global perspectives in higher education.

Because of generous donations from broadcaster, pastor and influential speaker Dr. Billy Kim and other South Korean supporters, the international center became a reality and is now a symbol of friendship between Belhaven and South Korea.

The 16,000 square foot, two-story facility has a flexible design that allows for diverse programming within the building. The international center can be reserved by outside organizations for conferences and events.





THE UPPER LEVEL of the center provides a flexible conference space that allows theatre-style seating for 300 or banquet-style seating for 200. This large area can be divided into break-out rooms seating 25 to 30 or 50 to 60. This level also contains a serving kitchen to support the conference facility and a large lobby for gathering before and after functions.

• THE DEDICATION • THE DEDICATION • THE DEDICATION • THE DEDICATION • THE DEDICATION • THE DEDICATION • THE DEDICATION • THE DEDICATION • THE DEDICATION • THE DEDICATION



Belhaven President Dr. Roger Parrott, Mississippi Governor Phil Bryant, Mrs. Robbie Hughes and Dr. Billy Kim cut the ribbon to officially open the Dr. Billy Kim International Center.





CONFERENCE CENTER RECEPTION

ION • THE DEDICATION • THE DEDICATION • THE DEDICATION • THE DEDICATION • THE DEDICATION • THE DEDICATION • THE DEDICATION • THE DEDICATION • THE DEDICATION



Chairman of FEBC-Korea Dr. Billy Kim, Mississippi Governor Phil Bryant, University President Dr. Roger Parrott and Chairman of the Board, Calvin T. Wells stood in front of the mural celebrating Dr. Kim's time as an interpreter for Dr. Billy Graham at one of the largest crusades in world history. The mural is on display in the foyer (pictured above), along with a digital history of Dr. Kim's ministry.

Technologically advanced classroom and seminar rooms give students a dedicated space for international studies and English as a second language. Located in the center of campus, these rooms allow for lecture or group project learning. (Below) Prayer room features John 3:16 in 13 different languages.



KOREAN STYLE PRAYER ROOM

• THE DEDICATION • THE DEDICATION • THE DEDICATION • THE DEDICATION • THE DEDICATION • THE DEDICATION • THE DEDICATION • THE DEDICATION • THE DEDICATION • THE DEDICATION



Dr. Billy Kim visited with guests after the banquet and prepared to tour the brand new facility.

The world-famous FEBC-Korea Children's Choir performed several patriotic songs and hymns for a delighted crowd.





BANQUET HALL

ION • THE DEDICATION • THE DEDICATION • THE DEDICATION • THE DEDICATION • THE DEDICATION • THE DEDICATION • THE DEDICATION • THE DEDICATION • THE DEDICATION



Over 300 business leaders, professional broadcasters, choir members and staff from Far East Broadcasting Company (FEBC) flew to the University to commemorate the opening of the new conference facility.



WHAT DIFFER



THE ADDITION OF BELHAVEN BOWL STADIUM

EXPERIENCE

ALL CHAIR-BACK SEATING



WOMEN'S SOCCER

FOOTBALL



MEN'S SOCCER



MARCHING BAND

DANCE AND CHEERLEADING

"There's not a location on our campus that is more uniquely 'Belhaven' than the Bowl, and this project takes all that is special there and raises it to the standard of an elite facility for our student-athletes and generations to come."

Scott Little
Vice President
for Athletics
and Student Life



Major Gift Launches Engineering Partnership

Belhaven's new Engineering Partnership received a major gift of \$750,000 to provide the start-up costs for the dual degree program with the University of Mississippi. This substantial gift from Wirt and Linda Yerger will significantly advance Belhaven's dramatic growth in STEM-related studies.

The gift will provide faculty salaries for the first three years as well as scholarships for top-performing freshmen accepted into the engineering program in Belhaven's School of Science and Mathematics.

Honoring this strategic gift, the University has named Dr. John Estes as the first holder of the newly established "Yerger Chair of Mathematics and Director of the Engineering Partnership." Dr. John Estes, said, "It is difficult to not overstate the significance of a contribution like the one we have received from Wirt and Linda Yerger. In addition to providing support to faculty, instrumentation and laboratories, such a gift as this gives Belhaven's Engineering Partnership an impressive endorsement and validation."

"Beginning a program of this magnitude is expensive, but critical to serving students who want a Christian foundation to their engineering education," said Belhaven President Dr. Roger Parrott. "A Christian Worldview provides a distinct advantage in understanding humanity, and with this background Belhaven engineers can offer unique perspectives that face our complex world today. This gift will have a long reach because once the program is strong and self-funding, it will serve engineering students for decades to come. In the years ahead many lives will be touched because of this gift to get the program started right."

The partnership between Belhaven's School of Science and Mathematics and the University of Mississippi School of Engineering has received high acclaim since it was announced a year ago. Fifteen freshmen were accepted for the current fall semester, and applications are competitive for next year's class.

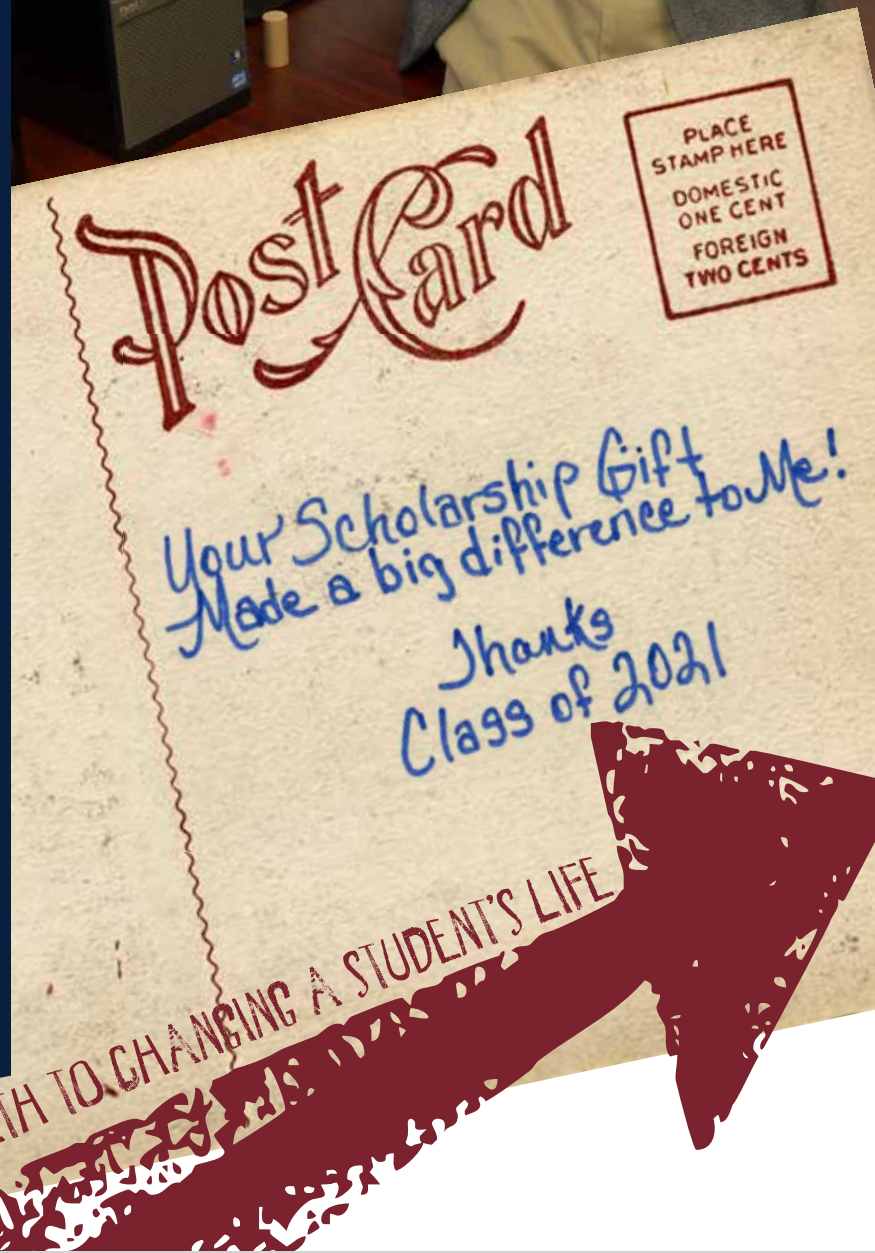
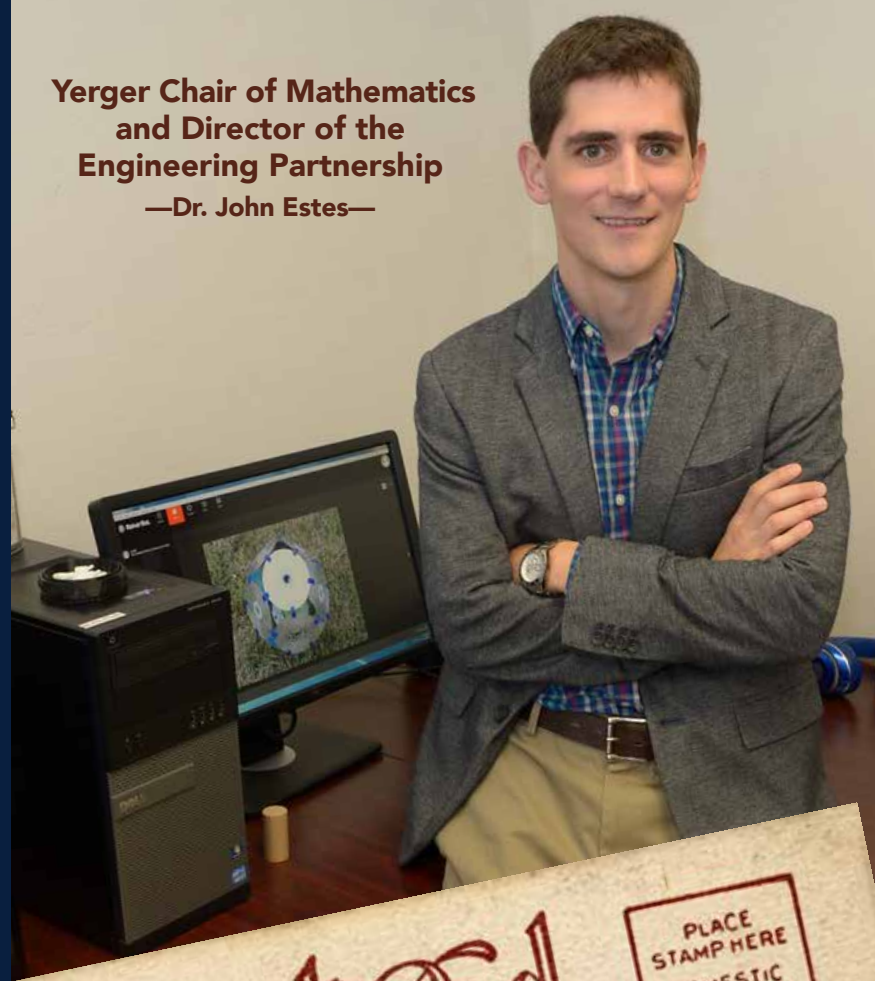
Because of the generosity of this gift, students will have the opportunity for hands-on learning with modern technology. Dr. Estes adds, "From mathematical modeling using advanced computer software to designing blue prints of prototypes to be printed on 3D printers, Belhaven students are learning career-building tools in an environment of Christian academics."

Dr. Estes plans to network with engineers and technology companies in the area to provide unique opportunities for students to test their ideas and develop a vision for their future. "Belhaven will have the backing to recruit academically competitive students and a voice to partner with engineering and technology firms in the Jackson area," points out Dr. Estes.

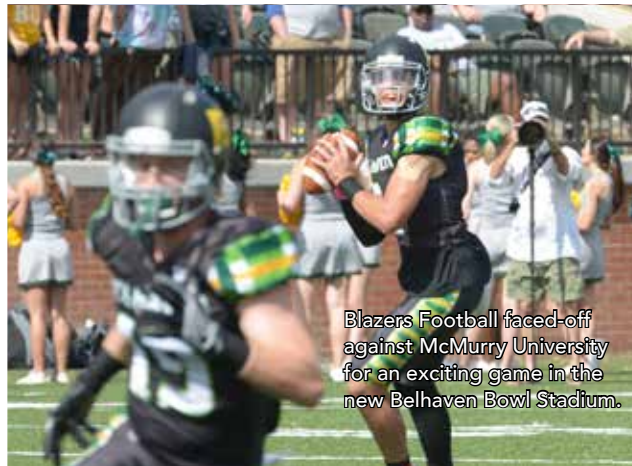
The partnership enables students to study at Belhaven their first three years to complete requirements for their science core and liberal arts. They may then enroll in an upper level engineering curriculum at Ole Miss for an additional two years of study. With all requirements met, students will receive a degree from Belhaven in Mathematics or Chemistry and a degree from Ole Miss in Engineering.

**Yerger Chair of Mathematics
and Director of the
Engineering Partnership**

—Dr. John Estes—



Members of the 2016 Belhaven Homecoming Court join the fans to cheer for the Blazers.



Blazers Football faced-off against McMurry University for an exciting game in the new Belhaven Bowl Stadium.



Christopher Moody and Mary Malone were crowned Belhaven's 2016 Homecoming King and Queen.

HOMECOMING BACK TO BELHAVEN 2016



The Belhaven Class of 1966 enjoyed their time together for the 50 Year Club.



Angela Thomas '11 was awarded Young Alumni of the Year (see pg. 22 for detail).



Valda Miller '50 was awarded Belhaven's Alumni of the Year (see pg. 22 for detail).



Summit Connects Faith and Mental Health in Mississippi



DR. PRESTON CROWE
Broadmoor Baptist Church



**DR. BRADFORD SMITH
AND DR. BARBARA JOHNSON**
Summit Co-Directors



DR. ROGER PARROTT
President, Belhaven University



DR. JOYCE OLUTADE
University of Mississippi Medical Center

In a major effort to mobilize churches to work together on the issue of mental health in Mississippi, Belhaven University's new Institute for International Care and Counsel hosted a Summit on the Church, Health & Mental Health for 145 pastors, mental health workers, social workers, nurses and community leaders on October 21–22. Summit organizers noted that virtually all of the challenges facing the state have a mental health component, and the church is the first place people turn to for help. The Summit focused on building bridges between church, mental health and health leaders and explored ways to work together in advocacy, prevention, support and training.

In recognizing the strategic role of churches in promoting mental health, Belhaven President Dr. Roger Parrott noted, "Our hope is that this Summit will not just be an event, but that it will be a launching pad, igniting a movement to challenge churches in Mississippi to embrace mental health and wellness ministries and be equipped to do so."

Two special guest speakers, one a New York psychiatrist and the other a well-known Jackson pastor, headlined the Summit. Dr. Sidney Hankerson, assistant professor of psychiatry at Columbia University, College of Surgeons and Physicians and a nationally known researcher on churches and mental health stated, "Major depression is the number one cause of disability worldwide."

Bishop Ronnie Crudup, administrative bishop for Fellowship of International Churches and senior pastor of New Horizon Church International, shared his personal story of struggling to help a loved one with a mental health crisis—an experience he called "being in the mental health zone." He said, "Any one of us can find ourselves in the mental health zone. Let's not allow families to suffer alone."

Our hope is that this Summit will not just be an event, but that it will be a launching pad, igniting a movement to challenge churches in Mississippi to embrace mental health and wellness ministries and be equipped to do so.

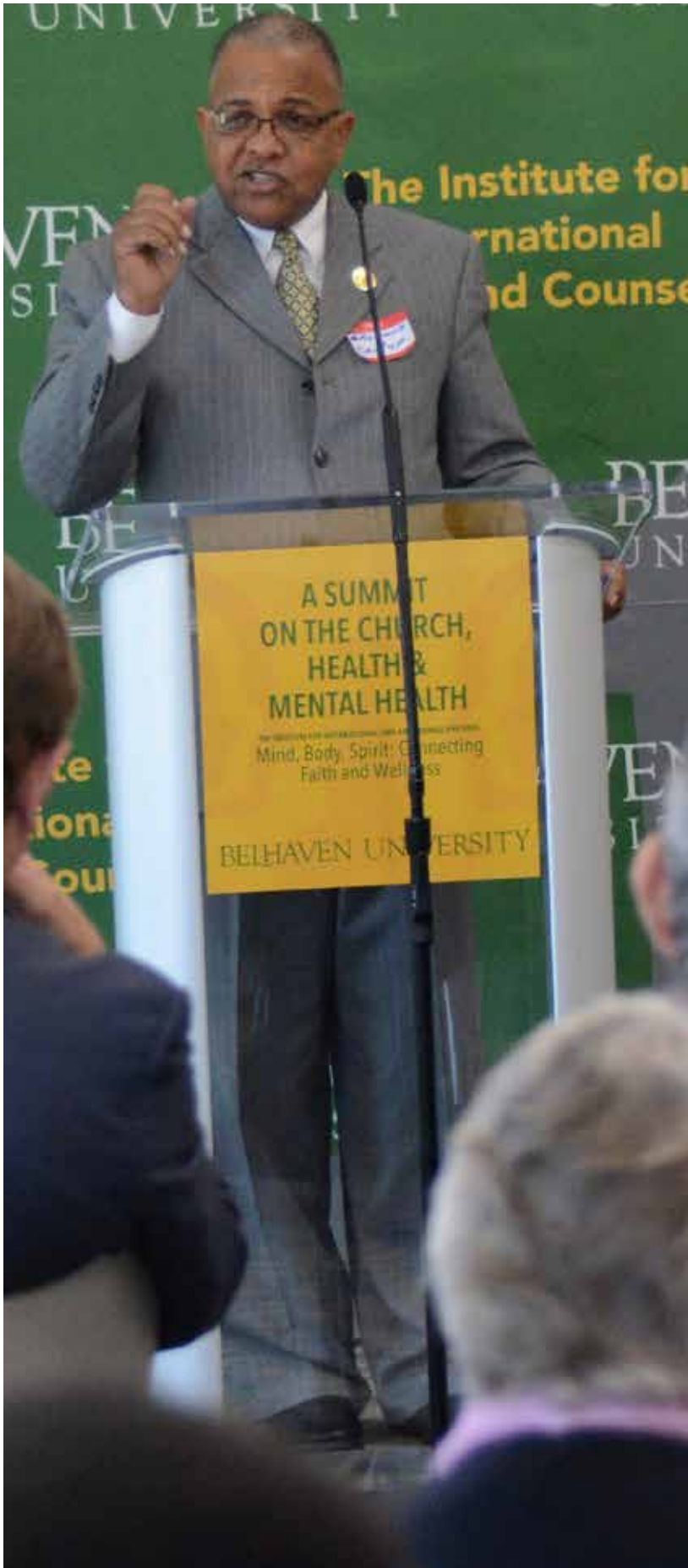
Dr. Ed Stetzer, director of Wheaton College's Billy Graham Center, addressed the crowd by video on how churches can reduce mental health stigma. He urged pastors to include mental health in their preaching and teaching, sounding the theme that "sermons break stigma."

Over the past six months, a Belhaven research team conducted focus groups with local churches to evaluate their strengths and challenges in responding to people with mental conditions. "One of the key findings is that pastors feel ill-equipped to preach and teach on mental health," revealed Dr. Bradford Smith, Summit co-director and director of the Institute for International Care and Counsel. "In addition, they often simply don't know how to respond to the complex mental health needs of their people. There was a clear call from pastors and other church leaders for more training."

Recognizing that mental and physical health have a great impact on each other, the Summit included physicians and nurses in the dialogue. According to Belhaven's Dean of the School of Nursing and Summit Co-Director Dr. Barbara Johnson, "It's been proven that people with mental illness often have physical health problems and are less likely to seek medical attention."

Belhaven also invited key public figures for a pre-Summit leadership luncheon to inform community leaders, including senior pastors, government officials and health administrators on the long-term vision and plan of action.

"The outcome of this event is not a stand-alone Belhaven University program," stated Dr. Smith. "It will be a collaborative effort, and we are humbled to act as a catalyst in initiating it and helping it move forward." Building on the Summit, the Institute is offering training and services to churches and faith-based organizations in Mental Health First Aid—an eight-hour certification program for non-professionals, health and mental health ministry, development, and health and mental health screening.





Social work students participate in a poverty simulation project at the direction of Dr. Angela Gaddis. Projects such as these, in conjunction with a strong curriculum, contributed to CSWE awarding national accreditation.

BAPTIST STUDENT UNION WELCOMED TO BELHAVEN UNIVERSITY

Adds another opportunity for students to know, love, serve and share Christ together

Belhaven University's commitment to fostering Christian growth for students was reaffirmed this fall with Baptist Student Union (BSU) launching ministry programs that serve the University's 1,200 residential students.

With one-third of Belhaven's traditional student body coming from Baptist churches, Vice President of Student Life Scott Little noted that BSU would be a strong fit with the University's thriving Christian community. "BSU strives to provide a balanced program of Christian growth and ministry opportunities for all collegians, and they will enhance the fiber of our student life experience. BSU is becoming an integral part of campus life at Belhaven."

Rev. Seth Starkey, Belhaven's Reformed University Fellowship minister, enthusiastically welcomed BSU, saying, "We are excited that BSU is alongside Reformed University Fellowship and the Fellowship of Christian Athletes with the shared desire to minister to the Belhaven family. We believe this adds yet another opportunity for students to know, love, serve and share Christ together."

The Baptist Student Union is found on 24 community college and university campuses across Mississippi. Each BSU is student-led and offers programs that are coordinated by seminary-trained directors. Lloyd Lunceford, Director of Collegiate Ministry for the Mississippi Baptist Convention Board added, "Belhaven BSU is a fellowship of Christian students that offers on-campus Bible studies and worship, in addition to local, national and global missions opportunities throughout the year. Belhaven BSU is connected with dozens of BSU groups and thousands of college students throughout the state of Mississippi through annual statewide ministry meetings."

SOCIAL WORK PROGRAM ACHIEVES NATIONAL ACCREDITATION

Allows our students to sit for licensure exams equipping them to better compete in the job market

Belhaven's Social Work Department reached an important milestone when the Council on Social Work Education (CSWE) awarded the program national accreditation.

"This is a momentous step for our program," said Dr. Angela Gaddis, chair of the social work department.

"This status gives our social work program national recognition by accrediting bodies and licensure boards. We are excited about this accomplishment and know that it will benefit our current and future social work students."

Graduating from Belhaven's accredited social work program can give students an advanced standing in graduate schools and, depending on the institution, helps them

complete their master's degree in less time. This saves money on future tuition and time toward their career.

Accreditation means more opportunities for learning and field placement. Dr. Gaddis adds, "This status provides learning experience in the medical field, schools, international agencies and in more intricate mental health centers. It also allows our students to sit for licensure exams equipping them to better compete in the job market."

Anita Trigg, assistant professor of social work, points out, "CSWE's accreditation shows prospective students the value of a social work degree from Belhaven University throughout the United States as well as globally. It also communicates to social

work and social service agencies that our students can be groomed into potentially great employees who have received a well-rounded, accredited academic course of study."

The CSWE is the only social work accrediting body in the nation. The multi-step, four-year process involved self-studies, site visits and reviews by the Commission of Accreditation (COA).



BELHAVEN BOARD OF TRUSTEES ELECTS THREE NEW MEMBERS

The Belhaven University Board of Trustees elected new members Mr. Sam Lane, Mrs. Karen Taylor and Dr. Kevin Brown to the board. The new appointees bring a wealth of knowledge and experience to the University's leadership team.



MR. SAM LANE is Senior Vice President of First Commercial Bank and has over 40 years of experience with Jackson area banks that includes Deposit Guaranty National Bank and First Commercial Bank. His work in middle-market commercial and corporate lending has given him a firm standing in business and banking throughout

the state of Mississippi. He was part of the team that started First Commercial Bank 15 years ago, and prior to that, he served as senior vice president at Deposit Guaranty National Bank for 17 years.

Born in Jackson, Mr. Lane has lived in the capitol city his entire life. He graduated from Jackson Prep in 1972 and earned his Bachelor of Arts in English from the University of Mississippi in 1976.

Currently, Mr. Lane is the vice chairman of the Wilson Research Foundation, the fundraising arm of the Methodist Rehabilitation Center. In addition, he sits on the Junior League of Jackson's Keystone Fund board and has served on the Mississippi Kidney Foundation Board of Trustees since 1979.

Past board member appointments include Mississippi Sports Hall of Fame, Jackson Prep, St. Andrew's Cathedral Vestry Member and Stewardship Chairman, Metropolitan YMCA and Neighborhood Christian Center. He was also the Fundraising Chairman for the Guyton Science Center, a \$2 million state-of-the-art science laboratory at Jackson Prep. He is a member of St. Andrew's Episcopal Cathedral. Mr. Lane is married with three children and three grandchildren.



MRS. KAREN TAYLOR is a volunteer and fundraiser for numerous Mississippi non-profits. A graduate of the University of Mississippi, she earned a Bachelor of Arts in Marketing in 1986 and M.B.A. in 1987.

She has an extensive background in community service and charity work throughout the state. Mrs. Taylor has recently served on Jackson Prep's Capital Campaign and has mentored with Prep's Global Leadership program. She has volunteered for the annual Ovarian Cycle Jackson, benefiting ovarian cancer research, and has raised funds for Mississippi Industries for the Blind. Her previous board appointments include The Gardner

Simmons Home for Girls, Jackson Friends of the Animal Shelter and Secretary to the Vestry at Chapel of the Cross. She is a past member of the Junior League of Jackson, Jackson Cancer League and the Symphony League.

Mrs. Taylor worked 13 years in sales for North American Plastics, 1987-2000, and she was the owner of Omi Boutique from 2004-2010. She is a member of St. James Episcopal Church and is married to Jeffrey Taylor. Together, they have six children; Anthony, Andrew, Kelly, Olivia, Claire and Alex.



DR. KEVIN BROWN currently serves as a faculty member at New Orleans Baptist Theological Seminary. He recently earned his Ph.D. in Urban Studies from the University of New Orleans. He completed his psychology degree at Wheaton College and earned his Master of Social Work from the University of Illinois.

Prior to urban missions, Dr. Brown began work as a therapist with abusive families under contract to the Illinois Department of Children and Family Services. He was part of the State Attorney's Task Force on Mass Molestation and worked for the Minirth Meier New Life Clinics specializing in counseling youth and families.

He authored several books including: *The Quest: A Self-Discovery Workbook for Teens*, *Setting New Boundaries: Devotions for those in Recovery and You Take over God*, *I Can't Handle It: Devotions for Teens in Recovery*.

For many years he hosted the show *Talk It Out* heard on WYLL in Chicago and was a weekly host for the nationally syndicated *The Minirth Meier Clinic*. He has frequently appeared as a guest on radio and television nationally and internationally speaking about the issues families face. He has also led seminars internationally on marriage and family topics.

From 1998 to 2014, he served as the executive director of Trinity Christian Community, a Christian community development agency. Some of his ventures have included teaching entrepreneurship to at-risk youth, running after-school activities and organizing community-wide programs to target needy families and disadvantaged youth in New Orleans' inner city. During this time, he also served as chaplain to the NBA's New Orleans Hornets from 2003-2010.

He was awarded the Presidential Lifetime Service Award by George W. Bush and the Meritorious Public Servant of the Year by U.S. Attorney General Eric Holder. He was also named United States Citizen of the Year by the U.S. Marshals Service. Dr. Brown has a long history with Belhaven, speaking at several chapel services over the years. His daughter, Chloe '14, graduated from the University with a degree in art. He has been married for 28 years to Sandy, and together they have raised three children: Seth, Chloe and Leah.



U.S. NEWS NAMES BELHAVEN BEST VALUE

U.S. News and World Report awarded Belhaven the prestigious title of 2017 Best Value. Only 31 regional universities in the South were selected for the list, and Belhaven ranked 20th out of the top schools.

Kevin Russell, Vice President for Enrollment and Marketing, said, "This award affirms the tremendous value found in a degree from Belhaven University and we take great pride in being named to this distinguished list of colleges and universities."

According to U.S. News, best value schools are above average academically and cost considerably less than many other schools when the financial aid that they dispense, in the form of need-based grants and scholarships, is taken into account. Russell adds, "Competitive pricing and strong scholarship opportunities give students a top quality, private and Christ-centered education at public university prices. We strive to be exceptional stewards of our resources and seek to provide a quality education at costs that are obtainable."

This ranking is one of many for the University and other institutions have recognized the value of a Belhaven degree. For the twelfth consecutive year, Belhaven was honored as America's 100 Best College Buys for its affordability and financial aid available to its students.

For seven consecutive years, Belhaven has been recognized as a Christian College of Distinction. U.S. News and World Report released its "Best Colleges" edition, and for the fourth consecutive year, the University was named among the top regional colleges in the South. U. S. News also rated Belhaven a top college offering online bachelor degrees and a leading college for veterans.

Additionally, Belhaven has been honored for three consecutive years as

a Military Friendly institution, and the University was named one of America's Best Christian Colleges by Instructional Research and Evaluation.

The Best Value rankings were based on ratio of quality to price, need-based aid and average discount. The ratio of quality to price accounted for 60 percent of the overall score; the percentage of all undergraduates receiving need-based grants accounted for 25 percent; and the average discount accounted for 15 percent.

DANCE MAJORS REPRESENT MISSISSIPPI ON NATIONAL STAGE AT KENNEDY CENTER

Among two universities in the southern region selected

Representing one of only two universities in the southern region and one of 31 colleges in the nation, Belhaven dance majors traveled to the nation's capital for a once-in-a-lifetime performance. Eight students took the national stage at the Kennedy Center and performed an original choreographed dance,

"I Am Not A Plastic", at the National College Dance Festival on June 11, 2016.

The dancers were selected after a riveting performance of Sung Yong Kim's choreography at the American College Dance Association's (ACDA) southern regional conference. To be awarded the honor to perform in Washington D.C., Belhaven competed against such institutions as the University of Southern Mississippi, Alabama State University and the University of Texas. "Although we have attended the ACDA's conferences over the years, this was our first opportunity to be awarded national recognition resulting in performances at our nation's capitol," said Cynthia Newland, professor of dance at Belhaven.

Belhaven was one of the smallest colleges who participated at the annual festival and Newland adds, "We were recognized for our pursuit of excellence in the arts. I believe the solid technical dance training and foundation of our faith, integrated throughout our program, laid the groundwork for this artistic endeavor."

Belhaven joined 31 colleges and universities across the United States including California State University, Columbia College, Florida State University,

Eight Belhaven Dance students took center stage at the Kennedy Center to perform their original choreographed dance, "I Am Not A Plastic."



the University of North Carolina and others for three days of top collegiate dance performances.

“The festival provided a unique opportunity to view the extraordinary work being created in dance in higher education throughout the nation,” says ACDA Executive Director Diane DeFries. The dances to be performed at the national festival were chosen for their artistic excellence from each of ACDA’s 12 regional conferences around the country. Nationally recognized panels of adjudicators selected the works to be presented at the national festival.

PROFESSOR AND CYBER-SECURITY EXPERT DISCUSSES SAFEGUARDING PHONES, EMAIL AND PERSONAL INFORMATION

Dr. David O’Gwynn, chair and assistant professor of computer science, shared his expertise about smartphone security for a story with local newspaper, *The Clarion Ledger*.



Recently, a video surfaced that showed just how easy it is to hack into an iPhone by stealing someone’s fingerprint. Dr. O’Gwynn, a former MIT employee and expert in cyber security, said devices are increasingly under attack and biometrics aren’t reliable by themselves.

According to Dr. O’Gwynn, simple steps like two-factor authentication can make devices harder to hack. “Something as little as that, just that much ... the jump in security from just simply enabling two-factor is pretty big. It makes it so much more expensive to compromise an account if you have two-factor turned on.”

Further in the article, Dr. O’Gwynn points out other precautions that smartphone users can do to keep their devices and data safe. “You can’t just simply rely on a basic built-in security feature. You do need to know a little bit more about it and make sure it’s the right security feature for you. ... Security is not a fire-and-forget thing. It’s something that you have to be aware of at all times.”

While manufacturers install security systems, the responsibility of the security is up to the user. “You have to be on top of your own security and take into account that as much as Apple wants to try to make you as secure as possible through intelligence default, Apple doesn’t know you,” O’Gwynn said. “Only you know how important your data is, and you need to understand that when push comes to shove, you have to take care of your own security.”

In Belhaven’s computer science program, Dr. O’Gwynn uses current issues like these to teach students and keep them up-to-date on the latest cyber-security practices.

HAIEN’S PHOTOGRAPHY BOOK FINDS BEAUTY IN UNEXPECTED PLACES

Gretchen Haien, professor of art at Belhaven University, chronicled a seven-year journey through photography. Her first book, *Incidentals: Seven Years of Photography*, is being used to change perceptions on photography.

“Cell phone cameras have ruined the art of photography and have dumbed us



down,” said Haien. “We need to appreciate photography for what it’s for, as a creative art form, and not information storage.”

Incidentals is her response, record and interpretation of her life and was conceived as a way of nurturing art and its practice. Her hope is to educate and teach others about the beauty of photography and how it is a creative, expressive medium.

Haien gifted 400 copies of her book to universities and institutions of learning in Mississippi to educate students. She followed the book’s release with lectures and solo exhibitions at Fischer Galleries, Lemuria, Jackson State University and other locations to bring the conversation about photography back into focus.

“In the pages of my book, a series of straight, unmanipulated digital photographs offer contemplative insights found within scenes snatched from everyday life. It is an educational tool intended to help young art students as well as curious art appreciators find new and profound ways of seeing and understanding art and the art making process.”

The majority of the images in the book were shot right out her front door. In her book Haien shows, through a series of beautifully striking images, that beautiful photography is only a few steps away. “It’s not about traveling to remote, exotic islands for the perfect photograph,” suggests Haien.

“Young artists don’t realize that the creative source is at the tip of your nose; ten giant steps out your front door.” *Incidentals* was released August 21, 2016, and Haien is already working on her next book.



BELHAVEN WELCOMES NEW

Belhaven welcomed 17 new professors to the University. These skilled professors come from a variety of backgrounds and have a wealth of knowledge and experience to share with students.



Mrs. Krista Pieper Bower, Chair and Associate Professor of Dance, previously served as specialty instructor of dance for four years and as adjunct for five years prior. Bower received her B.F.A. from Belhaven University and her M.F.A. from Jacksonville University.



Mr. Rick Negron, Chair and Assistant Professor of Film Production, brings professional experience in the areas of producing, directing, editing, cinematography, photography and graphics work. Negron received his B.S. from the University of Miami and his M.F.A. from Regent University.



Dr. Seth Parry, Associate Professor of History, brings eight years of teaching experience from Emmanuel College. Dr. Parry received his B.A. from Houghton College, his M.A. from Hunter College and his M.Phil. and Ph.D. from CUNY Graduate Center.



Dr. Rebecca Geihlsler, Specialty Instructor in Music, has served as an adjunct music professor in voice, popular music and music history since 2009.

She holds a B.A. in music from Centenary College of Louisiana, a M.M. in vocal performance and doctor of arts in pedagogy from the University of Mississippi.



Dr. John Neiswinger, Assistant Professor of Biology, has a comprehensive background in the fields of biology, biochemistry and molecular biology, as well as proteomics. Dr. Neiswinger received his B.S. from Geneva College and his Ph.D. from Johns Hopkins School of Medicine.



Mr. Christopher Phillips, Specialty Instructor in Music, studied church music at Samford University in Birmingham, and continued there to complete his master's in music education; both degrees included a vocal performance emphasis.



Dr. Jonathan Koefoed, Assistant Professor of History, brings his teaching experience to Belhaven from the University of Texas and

Boston University. Dr. Koefoed received his B.A. from Arizona State University, his M.A. from Saint Louis University and his Ph.D. from Boston University.



Dr. Tracie Parish, Associate Professor of Exercise Science, has taught at several universities, most recently at the University of Bedfordshire, England. Dr. Parish received her B.S. from The University of Southern Mississippi, her M.Ed. from Mississippi College and her Ph.D. from Louisiana State University.



Mrs. Erin Rockwell, Associate Professor of Dance, has been a specialty instructor of dance for the past eight years. Rockwell received her B.A. from St. Olaf College and her M.F.A. from California State University.



Mr. Bill Moak, Chairman and Assistant Professor of Communication, has an extensive background in journalism, communications, and

integrated media. Moak received his B.A. from the University of Mississippi and his M.S. from The University of Southern Mississippi.



Dr. Andrew Parker, Assistant Professor of Business (Atlanta), has been teaching as adjunct for Belhaven. Dr. Parker received his B.A. from Southeastern Baptist Theological College, his M.Div. from New Orleans Baptist Theological Seminary and his Ph.D. from The Southern Baptist Theological Seminary.



Dr. Owen Rockwell, Specialty Instructor of Dance and Music, previously served as an adjunct faculty member for several years at Belhaven. He earned his B.M. and M.M. from University of Illinois at Urbana-Champaign and his doctor of musical arts in percussion, performance and pedagogy from the University of Southern Mississippi.



Dr. Stephen Ray Smith, Assistant Professor of Business Administration (Chattanooga), has 14 years of teaching experience including eight years as a Belhaven adjunct. Dr. Smith received his B.A. from the University of



Tennessee at Chattanooga, his M.I.B.S. from the University of South Carolina and his Ph.D. from Regent University.



Dr. John Song, Assistant Professor of Biblical Studies (Atlanta), has taught at Belhaven as adjunct for the past four years. Dr. Song received his B.B.A. from

Bernard M. Baruch College, his M.Div. from Westminster Theological Seminary and his Ph.D. from Trinity Evangelical Divinity School.



Mrs. Elizabeth Sweatt, Specialty Instructor of Dance, served as an adjunct in the dance department from 2010–2012. Sweatt received her

B.F.A. in Dance from Belhaven University and performed professionally with Ballet San Antonio and TALK Dance Company.



Ms. Kristen White, Assistant Professor and Chair of International Studies, has spent the last ten years as Director of Global Mobilization for

California Baptist University. White received her B.A. from Oklahoma Baptist University, her M.A. from Union University, her M.A. from Golden Gate Baptist Theological Seminary and will defend her dissertation in December 2016 for her Ph.D. from Claremont Graduate University.



Ms. Mia Whitehead, Specialty Instructor of Dance, previously served as an adjunct. Whitehead danced professionally with Ballet San Antonio, TALK

Dance Company and Front Porch Dance. She also served as the dance instructor for the USA International Ballet Competition's outreach program, CityDance, in Jackson for several years.

CLASSNOTES

BETTYE QUINN ('58) is celebrating her 50th year of teaching in the School of Education at Belhaven University. Bettye's achievement was honored at the University's Service of Dedication in August of this year, and she was recognized during the 2016 Homecoming Alumni Awards Luncheon.

BENNY JENKINS ('64) recently published his book, *Tales from the Yockanookany*, a collection of short stories of life in 1950's rural Mississippi. A former teacher for Jackson Public Schools, Benny recently retired from Hinds Community College, completing a career in education that spanned 50 years.

ROBERT ('66) AND ADRIANNE PENNY ('67) are both staying busy. Bob is semi-retired but travels for development and fundraising for African Bible College, Kampala, Uganda. He also teaches each spring semester in Uganda. Adrianne is a busy watercolor artist of sentimental homes and churches.

MILTON WINTER ('75) has completed his bicentennial history of Mississippi Presbyterians with *Citadels of Zion: A History of Mississippi Presbyterians, 1900–2016*. He

has retired after 28 years as a pastor in Holly Springs, Miss. He makes his home now in Memphis, Tenn.

KATHY GENDRON ('82), longtime Ocean Springs High School coach, has been inducted into the Mississippi Gulf Coast Community College Athletic Hall of Fame. Inductees are chosen on the basis of their accomplishments after school, as well as while a student. Most recently Kathy coached 18 seasons as the head tennis coach at Ocean Springs High School.

MELISSA THORSON ('86) was recognized for her 15 years of service to Belhaven University at the Service of Dedication in August. Dr. Thorson serves as a professor of art history and dean of the honors college at the University's main campus in Jackson, Miss.

LAURA LOVELL ('99) was recognized for her 10 years of service to Belhaven University at the Service of Dedication in August. Laura serves as the University's IT coordinator.

GREGORY HAWKINS ('05) was recognized for his 10 years of service to Belhaven University at the Service of Dedication in August. Greg serves as dean of students at the University's main campus in Jackson, Miss.



ALUMNI NEWS

Have interesting
ALUMNI NEWS?
 alumni@belhaven.edu




BELHAVEN NAMES ALUMNI OF THE YEAR AND YOUNG ALUMNI OF THE YEAR

The Alumni Awards Luncheon is an annual event during the Belhaven Homecoming Weekend that honors alumni young and old. Guests enjoyed good food and fellowship before the awards ceremony. Student actors from the theatre department entertained alumni with two songs from *Big Fish, The Musical*. During the awards luncheon, author Angela Thomas '11 was awarded Young Alumni of the Year. Valda Miller '50 was awarded Belhaven's Alumni of the Year. Both award winners shared their love for the University and how Belhaven has impacted their lives in many ways. Long-time professor and alumna Bettye Quinn was also honored for her 50 plus years of service at the University.



VALDA MILLER '50 was born in Rosedale, Miss. The daughter of a Baptist preacher, Miller moved around quite a bit during her elementary and high school years. Because she moved so much, she found it difficult to develop lasting friendships. She came to Belhaven in 1944, and it was here that she was able to make lifelong relationships. She commuted to Belhaven and was one of the

"Town Girls". While at Belhaven she met and married her late husband, Richard Miller. Miller had to quit school for two years while Richard served state-side in the military. When he was sent to Europe for two years, Miller was able to pick up right where she left off at Belhaven and graduated in 1950 with a B.A. in English. Miller has two children and is a proud grandmother and great-grandmother.



ANGELA "A.C." THOMAS graduated from Belhaven in 2011 with a B.F.A. in Creative Writing. She was born, raised and still resides in Jackson, Miss. She is an inaugural winner of the Walter Dean Myers Grant, awarded by We Need Diverse Books. Her debut novel, *The Hate U Give*, was acquired by Balzer + Bray/HarperCollings in a 13-publishing house auction and will be published in June 2017. Film rights have been optioned by Fox 2000 with George Tillman attached to direct and *Hunger Games* actress Amandla Stenberg set to star.

(Below) Vice President for University Advancement, Jeff Rickels welcomed guests to the Alumni Awards Luncheon held for the first time in the Dr. Billy Kim International Center.



ROBIN SAVOY ('07) graduated in May of this year with a Master of Science in Leadership from Belhaven University. Robin serves as the director of campus services at the University.

BRAD BEATTIE ('09) has been named executive director of the clinic, a division of Baptist Health Systems in Jackson, Miss. Brad is responsible for directing and administering overall practice management functions of the multi-specialty clinic and outpatient physical therapy network.

ALTONIUS PETERSON ('09) was recognized for his five years of service to Belhaven University at the 2016 Service of Dedication in August. Altonius works as the assistant director of student services at the University's campus in Memphis, Tenn.

DAVID HARBAUGH ('10) was recognized for his five years of service to Belhaven University at the 2016 Service of Dedication in August. David works in the IT department as BlazeNet administrator.

THERESA DOLANKSY ('11) was recognized for her five years of service to Belhaven University at the 2016 Service of Dedication in August. Theresa serves as the assistant to the state academic dean for adult studies at the University's LeFleur campus in Jackson, Miss. Theresa's husband, Frank, works for Belhaven as the facilities coordinator for the Center for the Arts. Their son, Jonathan, is in his junior year at Belhaven.

MICHAEL WELLS ('12) was recognized for his 10 years of service to Belhaven University at the Service of Dedication in August. Michael serves as a security patrol officer at the University's main campus in Jackson, Miss.

ANNA BELL ('13) was included in Mississippi Business Journal's Top 50 Under 40 List for 2016. Anna serves as a regional director for The Summit Health and Rehab. Bell and her husband, Andy, live in Madison, Miss. Where they spend time with family and friends and enjoy travelling.

CRAIG KITRELL ('13) was included in Mississippi Business Journal's Top 50 Under 40 List for 2016. Craig works as the assistant director of Mississippi State Hospital, leading the support services division. Raised in

Raleigh, Miss., Craig and his wife Sonjia have two daughters, Carrie and Hannah. He enjoys family time and exploring Mississippi.

DANNY BOLAÑOS ('14) was included in Mississippi Business Journal's Top 50 Under 40 List for 2016. With a portfolio of over 125 commercial clients, Danny is currently the assistant vice president of business banking at Regions Bank. Danny enjoys outdoor sports and spending time with family and friends. He and his wife, Rachel, have a son named Luca.

BRIDGET SMITH ('15) was included in Mississippi Business Journal's Top 50 Under 40 List for 2016. Bridget is technical director of compounds with Axiall Corporation in Madison, Miss. She likes to do Pinterest projects, sew and complete general arts and crafts projects. Scuba diving is a favorite pastime.

FERRIS BROWN ('16) was selected to participate in a one-year administrative residency program at the University of Mississippi Medical Center (UMMC). Ferris is now working alongside senior hospital executives, and administrative projects give him a variety of experience within an academic health setting.

ALYSSA CARD ('16) married Kyle Yoches on October 22nd, 2016. They married in Soso, Miss., surrounded by friends and family.

DERRICK JORDAN ('16) a sergeant and 16-year veteran of the Jackson Police Department received the 2016 Distinguished Service Award from the Mississippi Attorney General's Office of Crime Victim's Rights for his work and collaborative investigations with the AG's office.

BETHANY SAVOY ('16) married Mr. Benjamin Smith of Brandon, Miss., on November 5 of this year. Both Bethany and Benjamin are employed at St. Dominic Hospital in Jackson, Miss. The couple will reside in Brandon, Miss.



Vicki Moorehead holding Presidential certificate between Assistant to the President for Science and Technology and White House Office of Science and Technology Policy Director, Dr. John P. Holdren, and Assistant Director, Directorate for Education and Human Resources, National Science Foundation, Dr. Joan Ferrini-Mundy.

WHITE HOUSE HONORS VICKI MOOREHEAD ('88)

The White House awarded Belhaven alum Vicki Moorehead '88 the prestigious Presidential Award for Excellence in Mathematics and Science Teaching.

She is one of 213 outstanding K-12 science and mathematics teachers from across the country honored by President Obama.

"The recipients of this award are integral to ensuring our students are equipped with critical thinking and problem-solving skills that are vital to our Nation's success," President Obama said. "As the United States continues to lead the way in the innovation that is shaping our future, these excellent teachers are preparing students from all corners of the country with the science, technology, engineering and mathematics skills that help keep us on the cutting-edge."

The winners are selected by a panel of distinguished scientists, mathematicians and educators following an initial selection process at the state level. Winners of this Presidential honor received a \$10,000 award from the National Science Foundation to be used at their discretion and are invited to Washington, DC, for an awards ceremony, as well as educational and celebratory events, and visits with members of the Administration.

Moorehead has been an educator for 28 years, teaching fourth, fifth and sixth grade for the Catholic Diocese of Jackson. She taught for 20 years at St. Richard Catholic School, and in 2009, she played an integral role in the founding and development of St. Anthony Catholic School. She currently teaches fifth and sixth grade science while serving as the school's library media specialist and STREAM Coordinator.

As an avenue to engage, instruct and assess student learning, Moorehead integrates the arts into her classroom. Her classroom is an active learning center where her students' enthusiasm for science is evident. By teaching the arts, Moorehead feels she is able to reach all learners. She has presented professional development sessions for integrating the arts into the science classroom at the local and state level. She was the recipient of the National Catholic Educational Association's Distinguished Teacher Award in 2013.

Moorehead earned a B.A., summa cum laude, in psychology and a B.S., summa cum laude, in elementary education from Belhaven University. She also received her M.Ed., with honors, in education from Mississippi College. She earned her Library Media Specialist Endorsement and is currently pursuing STEM certification through Mississippi College. Moorehead is certified in kindergarten through eighth grade.





THEISEN IMPACTS ART WORLD

Mr. Nate Theisen, professor of art for Belhaven's Visual Art Department, is garnering the attention of the art community in Mississippi and beyond. His sculptures, mixed media and paintings are being praised by many for their beauty and design.

He was recently awarded a Visual Arts Fellowship Grant from the Mississippi Arts Commission (MAC). The grant honors Mississippi artists who demonstrate the ability to create exemplary work in their chosen field. MAC's fellowship program is highly competitive and only a small number of the total applicants receive the award.

Theisen's work was also selected to be in the 2016 Mississippi Invitational Exhibition at the Mississippi Museum of Art. The show, scheduled to run December 17 - February 18, 2017 features the top contemporary artists, living and working across the state.

The awards and recognition began earlier in the year when Theisen won second place during the 24th Southeast Regional Juried Fine Arts Exhibition in Florida. Theisen had two pieces in the exhibit, which lasted from January 23 to March 4. His art was included in an art festival in Louisiana and another exhibition in Georgia.

Over the summer, the accolades and recognition continued to grow. He earned first place in the 28th Annual Juried Exhibition hosted by the Texarkana Regional Arts and Humanities Council in Texas. In Alabama, three of Theisen's pieces were selected for the 58th Annual Juried Show, sponsored by the Gadsden Art Association and hosted by the Gadsden Museum of Art. One piece of artwork was added to the 51st National Juried Artists Exhibition at the St. Tammany Art Association's Miriam Barranger Gallery in Louisiana.

PARTING ART





A QUIET PLACE UNDER THE TREES

A Quiet Place Under the Trees is the formal name for the newly developed space under two sprawling oaks nestled between the McCravey-Triplett Student Center and the Dr. Billy Kim International Center. This expansive deck area has outdoor tables and chairs for singular contemplation and group conversations.

This popular student-gathering-outdoor-space was made possible thanks to a generous gift from Lex and Margaret Taylor of Louisville, Miss. the parents of Bailey Taylor, a current sophomore majoring in creative writing.

TARTAN

Volume 128 | Issue No.2 • 2016

The Belhaven Tartan is published by Belhaven University, 1500 Peachtree Street, Box 158, Jackson, Mississippi, 39202 for distribution to alumni, parents of students, and friends of the university. Please send alumni updates, address corrections, and other news to Belhaven Tartan, care of the address below. You can reach us by phone at 601-968-5930 or by e-mail at universityrelations@belhaven.edu or by fax at 601-968-8946. Visit our web site at www.belhaven.edu. Periodical postage paid in Jackson, MS. POSTMASTER: Send address changes to Belhaven University, 1500 Peachtree Street, Box 158, Jackson, MS, 39202.

THE TARTAN STAFF

EDITOR-IN-CHIEF AND DESIGN | Bryant C. Butler

EDITOR | David Sprayberry

DESIGNER | Corrie M. Hung

WRITERS | David Sprayberry, Bradford Smith

PHOTOGRAPHERS | Bryant Butler, Joe Ellis,

David Sprayberry, Hubert Worley

ALUMNI NEWS | Jim Goode

ADMINISTRATION

ROGER PARROTT | President of the University

DAN FREDERICKS | Senior Vice President, Provost

KEVIN RUSSELL | Vice President for Enrollment

and University Marketing

VIRGINIA HENDERSON | Chief Financial Officer

AUDREY KELLEHER | Vice President of Adult

and Graduate Marketing and Development

SCOTT LITTLE | Vice President for Athletics

and Student Life

JEFF RICKELS | Vice President

for University Advancement

BOARD OF TRUSTEES

T. CALVIN WELLS | Chairman of the Board

JIMMY HOOD | Vice Chairman of the Board

HUGH POTTS, JR. | Secretary of the Board

CHARLES CANNADA | Past Chairman

James M. Bateman, Forrest Berry, Charles Doty,

Stephen M. Edwards, F. Earl Fyke, III, Doug

Hederman, Wayne Husband, Verne Kennedy,

Jay Kyle, Liza Looser, Sean Michael Lucas, Virginia

Morris, Leisha Pickering, Randy Pope, III, W. Lynn

Stringer, Joseph Stroble, Gaines Sturdivant, Alan

H. Walters, Dolphus Weary, Rick Whitlock, Richard

Wilson, Mark Windham, Jerry Young

EMERITUS

James Baird, Wilson Benton, Jr., Lee Breeland,

William T. Dawson, S. A. Robinson, Jr.,

William F. Winter

BELHAVEN
UNIVERSITY

1500 Peachtree Street, Campus Box 158
Jackson, Mississippi 39202-1789

NON PROFIT
ORGANIZATION
U.S. POSTAGE

PAID
PERMIT No. 95
JACKSON, MS

BELHAVEN THEATRE PRESENTS IN 2017

Mayfair
Ma Chère

BY JOSEPH FROST

FEBRUARY 17-18, 22-25

Meredith Willson's



APRIL 21-22, 25-29

MARCH 30-APRIL 1

sketching the soul